

# Hoofprints of Love

JUNE 2016

**BEGIN AGAIN FARMS, INC. EQUINE SHELTER**



**SPRING IS IN THE AIR**

## CONTENTS

	For Adoption—Donkeys, Mules, Ponies	20
Max's Corner	2 For Adoption—Horses	21
In Memory of Bill Juroff	3 Wish List	27
Memorial Ride Thank Yous	8 Volunteer Opportunities	29
The Trails	9	
The Obstacles	10	
Sponsorship	16	
Goodbye, Old Friends	18	
Adopted, Fostered, Adoption Pics	19	

**MARK YOUR CALENDARS!**

**2016 RESCUE RIDE**

**SEPTEMBER 24, 2016**

## Max's Corner: An Eye on the Farm

*Max is the spokeshorse for Begin Again Farms, Inc. You can always see him standing on the corner, watching everything that is going on.*

Hay everyone!

So much going on, where is the starting gate? Gates! That is a good place to start! As I mentioned in last quarter's column, we lost one of our large grazing areas after the land was sold. We put out requests to the community for anyone willing to put some of us up so we didn't overgraze the Big Field, and the support was wonderful. Already some have gone to be fostered with various supporters.

And then just last week, the wonderful Fuller family said we could have a pasture across the street if we helped fence it. NO PROBLEM! Our wonderful volunteers have it completed, and horses are safely moved. A HUGE thanks to the Jim Fuller family!

What else have we done? We built a new shed for one of the sponsored fields. Here is a picture of the donkeys Happy & Taz checking it out. We've gotten a lot of work done at that site, which seems to be our current location for horses that need special attention and doctoring.



Bicyclists and their support crew came by for a picnic lunch and tour of Begin Again Farms on a "Tour de Farm", a fund-raiser for the Fuller Center for Housing, an international non-profit building and renovating houses for families in need. See pictures on page 4.

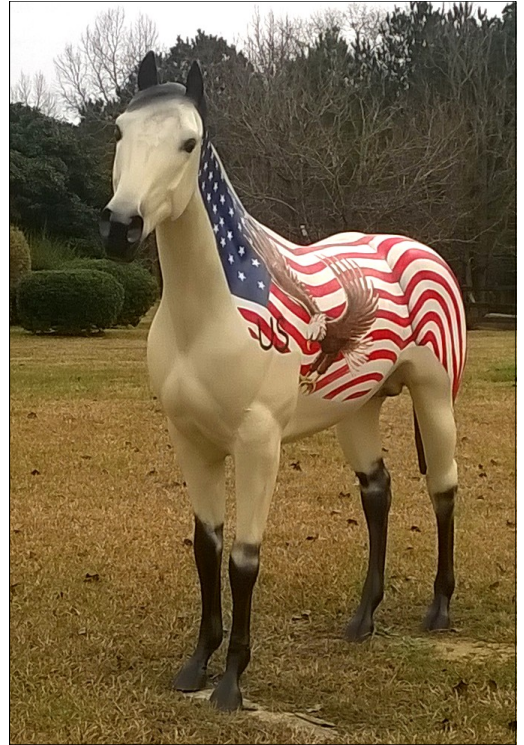
And, yes, we have had horses this quarter with special health issues. Darling Wildfire came to us, and was a little overwhelmed and didn't feel well at all. Her former mommy came right over with some encouraging words, and Dr. Rachel diagnosed her as having ulcers. So she went over to this other place for special doctoring and a little more peace and quiet than she was getting in the paddock she had been in. Glad to say she is feeling much better. She really likes the ponies. Wildfire is seeking a sponsor. Please see her picture on page 17.

*(continued page 4)*

*Hoofprints of Love* is the newsletter of Begin Again Farms, Inc., a 501c-3 equine rescue in Ellerslie, GA.

If you are not on our e-mail list for the newsletter and upcoming events, please contact:

reusmannl@bellsouth.net



# Bill Juroff—

October 20, 1940—March 4, 2016

Family man, firefighter, bass fisherman, Navy veteran, BAFI volunteer.... Steady, kind, unassuming, always willing... Bill was all of these and so much more.

All we can say is, “We really miss you, Bill.”






# Tour de Farm

Columbus—Ellerslie—Pine Mountain—Whitesville

April 1<sup>st</sup>—3<sup>rd</sup>



\$ 110 full event  
\$ 95 full event (no camping)  
\$ 70 Day options

Registration fee includes camping, all meals on and Sunday, Support and energizing st.

**PetPal**  
Robin R...  
robin...  
G...

When you...  
If you're anything like...  
incredible companion...  
cats. When you're...  
make sure they're w...  
them just as much...  
started PetPal, to...  
you're an extended...  
Fluffy. So, leave the...  
vornail.

ROBIN, ROBIN...  
FARMS  
Great Cliffs

[www.fullercenter.org/bikeadventure](http://www.fullercenter.org/bikeadventure)

## The Fuller Center for Housing

Join the Movement to End Poverty Housing!

Washington to Washington, D.C.  
Summer 2016



\$1.5 MILLION Goal

**The Fuller Center Bicycle Adventure**



## MAX'S COLUMN *(continued from page 2)*

Tiny Tim (right) developed a toothache. The sweet boy was not feeling well at all. It turns out he had a baby tooth that should have fallen out, but hadn't. So poor Tim had to take a trip up to the veterinarian and have that pesky tooth pulled out. He was NOT a happy camper about the whole procedure. This was followed up by daily mouthwash treatments. He was so good about it. He moved from the Big Field to one of the paddocks so he would be easy to catch. The volunteers went out into his paddock and call his name, and up he galloped for the mouthwash and the



attention. Tim is available for adoption to the right family. He is young, mostly untrained, and ready to be started. He will be a jewel to work with. See his information on page 25.



And then there is Simon! What a saga! A few months ago, he overnight developed a problem with his eye—cloudy and appearing infected. On the advice of our local veterinarian, we took him to Auburn University Veterinary School. The upshot was that he was one of many horses that had a fungal eye infection. The veterinary ophthalmologist believes it might be because of the very wet winter we had. After a stay there, he was sent home with a battery of medications, and lots of good instructions, which he had to receive five times a day, taking about an hour each time. The line for medications had been put directly into his eye, and braided into his mane. At each of his medication treatments, he had to be walked (by a person) in between each type of medication so that he did not rub the line out. Thank you to **Saddle Up Tack and Feed**, who donated his zebra head covering so that he could walk alone! The veterinarians were impressed that we followed through on their instructions so well, despite having exhausted volunteers. The good news is that he now has sight in his eye! He is home, off medication, and SO glad to be out

*(continued on following page)*



## MAX'S COLUMN *(continued from page 2)*

of the stall and running around his paddock! This has been not only time-consuming, but very, very expensive. Simon could use some financial donations to help defray the cost.

If you have not yet seen our beautiful new interior fences, please come by and take a look. It really improves the whole look of the Farm, and will look even better once it has been painted. A portion of it near the tractor barn has been started and looks fantastic. Want to help paint? Volunteers are at the Farm most Saturdays between 9 a.m. and 1 p.m. doing this and whatever other chores need to be done. This would be a great and enjoyable group project as well, if your group looking for volunteer hours would like to take that on.

Another project that need moderate funding and labor includes the building of two new run-in shelters. The ones there now are in particularly dire shape due to heavy windstorms (possible tornado?). One of them should have been replaced anyway since not all the horses in the paddock can get underneath it. For this and any other projects, please contact Rhonda at 706-321-3067.

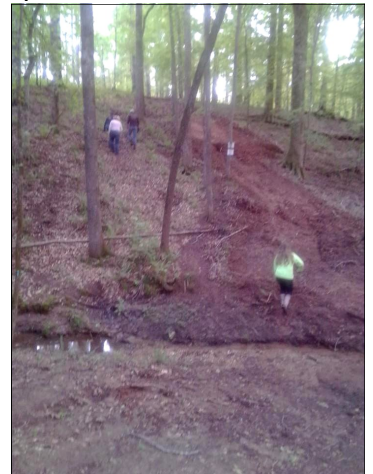
And now what I know you have all been waiting for - news of our Memorial Ride!



First I want to thank all the volunteers who worked so hard preparing the trails, the obstacle course, the lunch, the silent auction, minding the booths and everything else that I've forgotten. I have to tell you this is no mean hoof! Volunteers hauled and set up the obstacle course, cleared and put up new permanent markers for the trails, set up and ran the t-shirt and registration booths, cooked the lunch, monitored the obstacle course, assisted with parking and road crossing, and way too many other things too numerous to mention.

Winner of the 50/50 raffle (pot was over \$400): Nicole Ceccato

Winner of the raffle for the Yeti cooler: Judy Berringer



## MAX'S COLUMN *(continued from page 5)*

As tradition at the Memorial Ride, we had a special send off to the ones who we loved and miss so much! (Note: we used biogradable balloons.) Thank you to the Moore "boys" for their musical tribute.



**Waverly Hall**  
*Auto and Tire*

7667 GA Hwy 85  
Waverly Hall, GA 31831

**706-582-2300**

TIRES • BRAKES • OIL CHANGES • MAJOR/MINOR ENGINE REPAIR  
• SPECIALIZING IN FARM TRACTOR REPAIR AND DIESEL WORK  
• TOWING AVAILABLE

OWNER: RONNIE SEWELL  
706-984-1271

# A SPECIAL THANK YOU TO SPONSORS AND DONORS

## **Our Sponsors:**

Joey & Ramona Loudermilk  
Jim Fuller Farm  
Sam's Club  
Cooper's General Store  
Traceable Creations  
Waverly Hall Auto & Tire  
Green's Propane  
Wynn Vapes, LaGrange  
Commando Military Supply  
Vet to Pet  
Mark A. Lawrence, DDS  
DD Farm Supply, LaGrange  
Caravai's Day Spa  
Saddle Up Tack & Feed  
Debbie Snead  
Shirley's Accounting  
Waverly Place  
Sandman Sand & Gravel  
Legacy Aviary  
Happy Ours Farm  
Jo & Shelly Till  
Studio 2LR Architecture/Interiors  
Renee & John Mallory  
B. W. Capps  
The T-Shirt House

## **Special Thanks:**

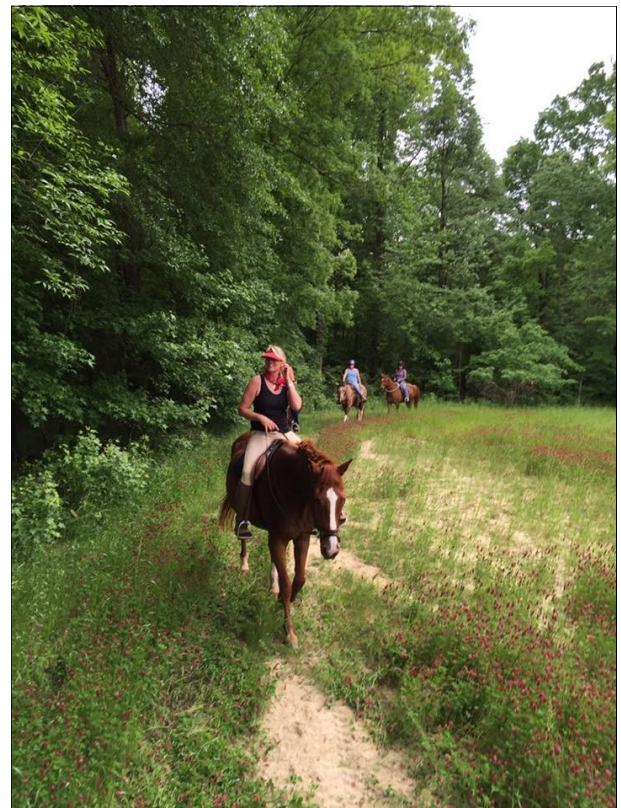
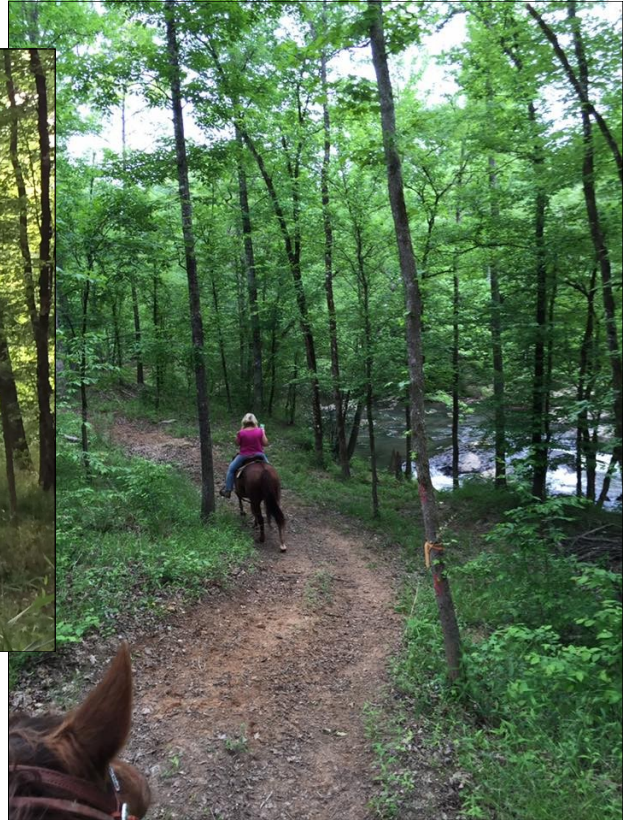
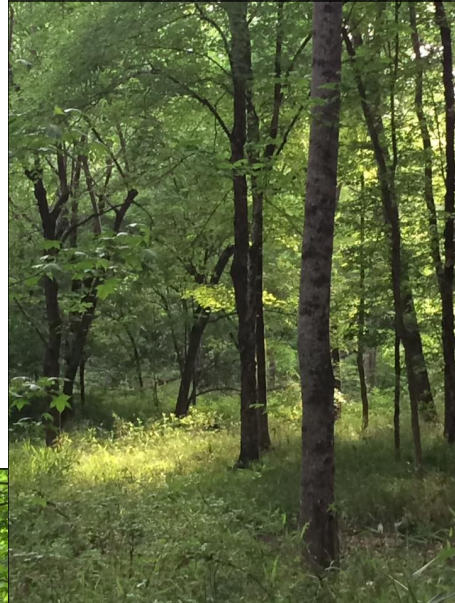
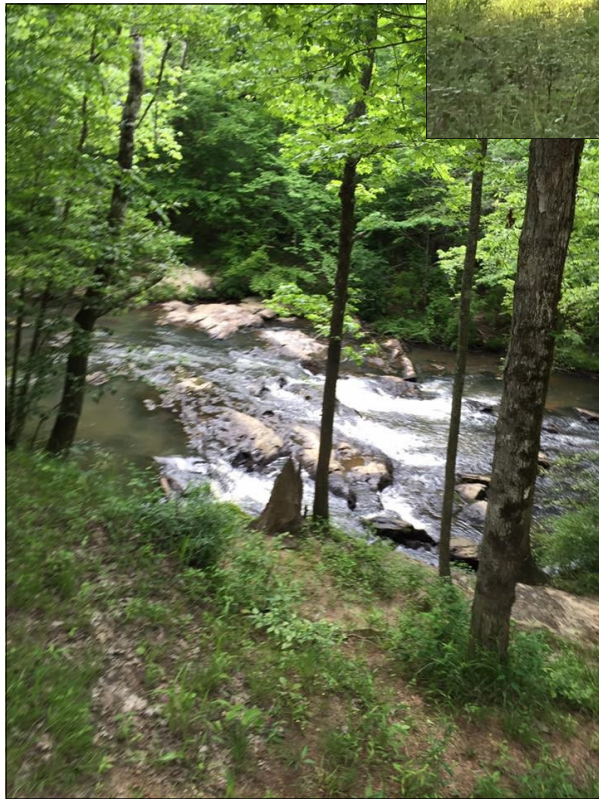
Patricia Malloy family  
Helen & Jim Fuller family  
Joey & Ramona Loudermilk family  
Philip Authement & Reaves Containers  
The Unwanted Horse Veterinary Relief Campaign  
(AAEP & Merck Animal Health)  
Eilerslie Fire Department  
Green's Propane  
Jessie & Julie Parks family  
Nancy & Kevin Waldeck  
Waverly Place  
and  
All of Our Wonderful Volunteers

## **Silent Auction Donors:**

Body Therapy  
By Invitation  
Callaway Gardens Steeplechase  
Carrabas  
Cherie Camp  
Dale & Yvonne Cates of Equitek  
Caravai's Day Spa  
Cooper's Hardware  
Embroidery by Charlene Jones  
Horseshoes by Jo  
House of Blair  
Legacy  
Ramona Loudermilk  
Luke's Pub  
Macon Road Veterinary Clinic  
Muddy Paws Farm  
Jessie Parks  
Phenix Serum  
Pine Mountain Wild Animal Safari  
Poplar Place  
Saddle Up Tack & Feed  
Elizabeth Satterfield  
Julie Seeley  
Shades  
Sierra Hinzman Soapery  
Debbie Snead  
Tires First  
Tractor Supply  
Valley Vet  
Veggies by John Mallory  
WC Bradley  
Waverly Hall Tire & Auto  
Waverly Place



## The Trails



### **Cooper's General Store**

9170 Ga. Hwy. 85  
Waverly Hall, GA 31831  
706-582-2011

**Lowest Livestock Feed Prices in  
the Area!!**

Nutrena—Manna Pro—FRM Foods

## ***The Obstacles***

### **The Teeter Totter**



**The Push-Go-Round**—The object of this exercise is for the horse to push the barrel with his chest. The barrel moves easily in a circle. Not so easy, as the horse's instinct is to move away from an object, rather than touch it. Note volunteers were on hand to explain every obstacle and offer recommendations.



**Barrel Cart**—The horse needs to push with his chest and move the rollers forward. Again, not easy.



**The Bridge and Carwash**—This year two different obstacles were combined to make one more difficult obstacle. Some horses avoided the bridge entirely, while others did not like the wind blowing the carwash. Sometimes it took several tries to succeed



**The Bear Bag**—Here the object is to grab the rope on the blue barrel, and back the horse up while the bag rises into the tree (to protect your campground from marauding bears and other critters) and then slowly move the horse forward while the bag moves slowly to the ground.



**The Spider**—One of the most challenging obstacles. Most of the horses refused to go from the front where the scary face was painted. Sometimes circling around the object, or letting the horse touch its various parts, or watching a stablemate go through first, or being led created success.



**STRINGS AND BOTTLES ON GROUND AND AIR**—Moderately challenging, especially when the wind was blowing and the bottles made noise. The soda bottles also felt funny under hoof.



**THE DOUBLE TARP**—In previous years we have used the blue tarp, by itself or with water on it, and this year added the black plastic on top of it. To a horse, that black part looks like a deep hole in the ground, and the horse may try to avoid it or jump over it. The horse has to trust his human that it is not truly a hole to the center of the earth. Sometimes it helps if he sees another horse do it first.

**TIRES**—Mounded and filled with dirt, there was a side for shorter horses and a side for horses that could take big steps. This was probably not as hard as it looked, but the riders seemed to have a lot of fun with it.



**THE MATTRESS**—It feels funny under hoof, but eventually most of the horses decided it could be done. We encouraged new riders to try the short side first, and then when the horse was okay with it to go the long way.



**STICK ON BARREL**—Harder for the rider than the horse, this allows you to move your horse in a full circle using your legs and weight instead of hands. The object is to leave the end of the stick on top of the barrel as you circle around it.



**SCARY POOL NOODLES**—Different than previous noodles in barrels, as these noodles will actually twirl around as you ride through. Horses felt most comfortable sniffing it and pushing with their noses before walking through.

## SPONSORSHIP

Help a horse at Begin Again Farms with a sponsorship for one of our unadoptable horses. You can spend as much or as little time with your sponsored horse as you wish.

**COCOA**—Young black mare, very sweet.. Cocoa is blind in one eye and cannot see well out of the other.

**HANDSOME**—Gorgeous white horse with major fear issues.

**IZZY**—Dun stallion, very good natured. Will never be able to be ridden due to foalhood injury. Izzy has a partial (financial only) sponsorship.

**LENA**—Beautiful bay Quarter Horse/Paint with lots of color. Not very trusting. Has COPD.

**MISTY**—(*Pictured right*) Sweet black small pony. She is easy to catch and lead and groom. She's carried a small child on her back with a lead line.



**PRINCESS**—(*Pictured left*) - Pinto miniature horse mare. She is a shy little mare, but much better than she was. Not mean, loves to be groomed. Not broke to ride. Leads and loads well.

(continued on following page)



## SPONSORSHIP

*(continued from previous page)*



**PICKLEENA**—registered bay Quarter Horse mare, 21 years old and going strong. She's had tons of training, but can be cold-backed. This mare knows a lot. Experienced rider only.

**POGO**—A darling older miniature horse. Loves grooming and treats. *(Pictured above)*

**REP aka REPLICAS IMPRESSION**—Over twenty-year old quarter horse gelding, full of pep. Ex-roper. Very experienced rider only. Has saddling issues.

**WILDFIRE**—Gentle chestnut mare, blind in one eye (it had to be removed). Has ulcers, but under control since removed from stressful situation. Prefers ponies and/or minis as her pasture mates. *(Pictured below)*



**FOR MORE INFORMATION ON SPONSORSHIP**— Please contact Rhonda at 706-315-6945

## GOODBYE OLD FRIENDS



### PRETTY BOY—

*“He saved me when I needed it the most.” - Mandy*

### LIL -

Only with us for a couple of weeks, and only about ten years old. So sad!



Bobby Noland  
Owner

Cell: 706-575-4450  
Office: 706-582-2630

GA. Hwy 85 • Ellerslie, GA

For Catering Services call Daphne Brown 770-364-1579

**A Special Thank You To**

**ALICE & JOHN  
SANDS**

**For their Sponsorship**

Adopted This Quarter

Snickers  
Juniper

Fostered This Quarter

Prissy  
Luke  
Tahoe  
Susie  
Tizzy  
Ginger  
Mack  
Rain  
Peanut II  
Voyager  
Pickleena

Adopters Send Their Pictures

Drake (formerly Lil Bit)  
in his new home



# DONKEYS, MULES, MINI<sub>s</sub> AND PONIES FOR ADOPTION



**HAPPY** (*Pictured left*)—A very sweet young gray **DONKEY** neutered jack. Small, but larger than a miniature.

**TAZ**—(*Pictured left*) -Young half miniature gray **DONKEY**, not neutered. Very shy. Will not get very big.

**MAGGIE MAE**—Lovely white mini mule, very timid. Really wants to be friendly, but just not sure.... With a little time, she could be a wonderful girl.

**MOSES**—(*Pictured right*) Handsome young **MULE**. He loves coming to the fence for human company (especially if they are bearing treats). Prefers women. Moses needs a mule-savvy person who will work with him one-on-one until he regains his trust.



**BEAUTY**— (*Pictured left*) Bay mare older **PONY**. Has done barrels. She can be a bit of a pistol, so she is not for the inexperienced child.

# Horses for Adoption



**BBR BITSY CUTTER**—(*Pictured left*) Chestnut **PAINT** (Tob-overo) mare, who spite her name is not small. Super nice, stands for farrier and fly spray, loads. Needs experienced rider. Hard to catch in large open fields.

**BINGO**—(*Pictured right*) Handsome sorrel **QUARTER HORSE** gelding, 3-year-old. Leads well. Will mature into a small horse. From cutting stock, but no papers. Accepts deworming paste and behaves well in herd situations. The best deal for Bingo is a knowledgeable and confident horse person who will understand his rough start in life. He came to us very suspicious of people, but has made great progress.



**BRAYGORN**— (*Pictured bottom left*) 8-year-old quiet bay **THOROUGHBRED** gelding. Very gentle. Off the track, used for trail riding. Has been Parelli trained. His only drawback is that he is a cribber.

## Horses for Adoption



**CHAMP**—Bay 3 year old **QUARTER HORSE** gelding. Ready to start training and can go in any direction. Has basic ground manners, accepts deworming paste and fly spray. Behaves well in herd environment. Socialized.

**CHEECH**—Chestnut **ARABIAN** gelding. Nice gelding. Has been ridden just a few times. Needs experience and training. Arabian racing stock

**CHIQUITA**—*Pictured above, left*) Smart little mare. Will make a really nice horse for someone with the knowledge to train her. She catches on very quickly. Has **ARABIAN** racing bloodlines. No papers

**LW CATALENA KATESBUCK**—Registered solid paint-bred dun mare, very sweet.



**LADY**—(*Pictured left*) This little lady is an eye catcher!!! Lady is a pretty **QUARTER HORSE** type, bay filly with one blue eye and a wide blaze. She accepts deworming paste, fly spray, and behaves well in a herd environment/ socialized. She is up to date on vaccinations and Coggins. Lady was foaled in 2011.

## Horses for Adoption

**LUKE**—(*pictured right*) bay **HOLSTEINER** gelding. Some English training, has done low-level eventing. Minor arthritis in hocks so he will not be able to jump. Needs experienced rider.



**PARIS (GOLDIE)**—**PALOMINO QUARTER HORSE** mare—Not broke to ride. Leads, loads.

**PRINCESS**—(*Pictured right*) This nice chestnut **ARABIAN** mare needs an experienced rider. She is green-broke and needs experience. She has a lot of fire.



P.O. BOX 400  
SMITHS STATION, ALABAMA 36877  
[www.greenspropanegas.com](http://www.greenspropanegas.com)



## Horses for Adoption

**RW DUALLYS MAIA JANE**—Really cute registered chestnut **QUARTER HORSE** mare. Small, wonderful personality. Has lots of potential for a knowledgeable person.



**RW PLAYBOYS ARROWLENA**—(*Pictured right*) Registered chestnut **QUARTER HORSE** mare, 14 hands. Friendly, quiet and sound. Unbroken with lots of potential for a knowledgeable person.

**SIROCCO**—(*Pictured right*) Gorgeous six-year-old registered **PALOMINO MORGAN** gelding. Athletic, conformationally correct. He needs a firm but fair owner providing consistency in riding and ground work. He has been ridden both English and Western, and has the potential for advancing in any discipline.



### **JIM FULLER FARM**

**Quality Coastal Bermuda Hay  
(Square & Round Bales)**

**Mulch Hay . Wheat Straw  
Seasonal Grain & Produce**

**706-570-4542**

### **Sheffield Automotive**

**MERCEDES BENZ , BMW, VOLVO  
AIR CONDITIONING SPECIALISTS  
PARTS SERVICE**

**TIM BUTTERFIELD  
706-563-9617**

4728 Warm Springs Rd.



## Horses for Adoption

**SUMMER—(Pictured right)** Registered **PAINT** Mare. Very sweet mare. Has done trails and jumping. Does not trailer well.



**TAHOE—**Nice bay off the track **THOROUGHbred** gelding. Needs experienced rider. Wonderful ground manners. Has training.

**TINY TIM—(Pictured right)** Tim is a handsome sorrel gelding with a diamond shaped star and 1 left hind sock. At 13.1hds and 650lbs, he had a rough start in life but oddly enough, is a compliant little fella. He has been clipped and saddled. He will mature into a small adult horse. Tim stands for the vet and farrier, stands tied, has basic ground manners, accepts deworming paste, fly spray, and behaves well in a herd environment/ socialized. He is up to date on vaccinations and coggins. Tim was foaled in 2011.



**BEACON HILL**  
INVESTMENT ADVISORY

**WILLIAM B. SHORTHILL, CFP®**  
CERTIFIED FINANCIAL PLANNER™

O: 614.469.4685  
F: 614.429.3194  
Bill@BHAdvisory.com

84 South Fourth Street  
Columbus, OH 43215

[www.BeaconHillAdvisory.com](http://www.BeaconHillAdvisory.com)



Accounting  
Tax Preparation

*Shirley's Accounting*

3776 U.S. Hwy. 80 W.  
Phenix City, Alabama 36870  
[www.shirleysaect.com](http://www.shirleysaect.com)

**Shirley Bolt, EA**  
**Accountant**

Office (334) 297-3209  
Fax (334) 297-3207

## Horses for Adoption

**TIROLUNGO**—(*Pictured right*) Tirolungo is a handsome bay 17 hand off-the-track **THOROUGHBRED** gelding. Aside from his racing career, he has done flat-work, jumping and fox hunting. (We feel he will not hold physically under the stress of fox hunting.) He needs experienced rider. He has a very nice disposition.

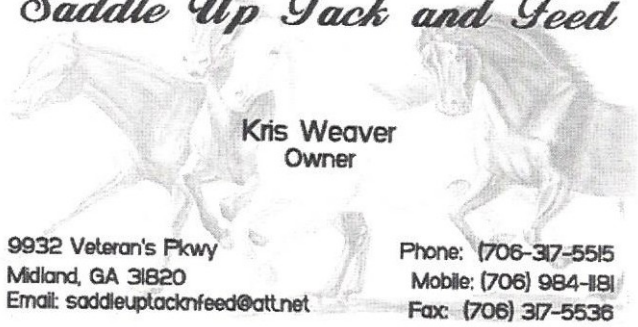


up  
an

**VOYAGER**—(*Pictured right*) Sweet little **MORGAN x MUSTANG** mare. Loves people. Has been ridden, needs experience and more training.



### *Saddle Up Tack and Feed*



Kris Weaver  
Owner

9932 Veteran's Pkwy  
Midland, GA 31820  
Email: [saddleuptacknfeed@att.net](mailto:saddleuptacknfeed@att.net)

Phone: (706) 317-5515  
Mobile: (706) 984-1191  
Fax: (706) 317-5536

### TRACEABLE CREATIONS web design

Tracie Moore  
[tracie@traceablecreations.com](mailto:tracie@traceablecreations.com)  
[www.TraceableCreations.com](http://www.TraceableCreations.com)

## Wish List

### Horse Supplies:

Nutrena Stock & Stable 12%  
Nutrena Safe Choice Perform  
Beet Pulp  
In Balance  
Mineral Blocks  
Sweet PDZ  
Shavings or Pellets for Stalls  
Wormer  
Fly Spray  
Fly Spray for Piranha Spray Master

### Tools and Equipment:

Any kind of yard tools  
Fence Charger  
Steel T-Posts—6'  
Any Size Gates  
Hog or Horse Wire  
Treated Lumber any size  
Power tools

### Help:

Electrician to do minor repair work

### Tack:

Any new or used saddles &  
miscellaneous tack  
Horse Blankets  
Easy entry miniature horse cart

### Event Needs:

Awnings (Free Standing)  
Picnic Tables or Banquet Tables

### Also:

Large Flatbed Trailer, minimum of 24 feet,  
dual axle. Can be gooseneck.

Find us on Facebook



HorseShoes by Jo  
Custom orders are Welcome  
Jo Till

No pieces are the same all my  
pieces are handmade  
Hamilton Georgia  
706-604-2213  
Cell:229-314-1205

katyandchispa@aol.com

**RITCH ELECTRIC CO., INC.**

**8A Certified SDB**

**Woman Owned Enterprise**

**706-322-6825**

**All services provided by Begin Again Farms, Inc. are funded entirely by gifts and donations.**

**For more information about how you can help support these extraordinary equines, please contact:**

**Rhonda Jackson, President  
Begin Again Farms, Inc. Equine Shelter  
PO Box 242  
Hamilton, Georgia 31811  
Phone (706) 315-6945  
E-mail: [beginagainfarm@aol.com](mailto:beginagainfarm@aol.com)  
Webpage: [www.beginagainfarms.com](http://www.beginagainfarms.com)**

All in-kind items donated are tax-deductible. As Begin Again Farms, Inc. is a volunteer organization, your donations go to the horses and the foods and items to make the horses' lives happier and healthier!

**YES!**

**I Want To Help A Friend Begin Again...**

Name: \_\_\_\_\_

Address: \_\_\_\_\_

City/State \_\_\_\_\_ Zip \_\_\_\_\_

Home Phone \_\_\_\_\_ Cell Phone \_\_\_\_\_ E-mail \_\_\_\_\_

**DONATION INFORMATION:**

Amount \_\_\_\_\_ (Make payable to Begin Again Farms, Inc.)

**Clip off form and mail to: Begin Again Farms, Inc., PO Box 242, Hamilton, GA 31811**

**ALL DONATIONS ARE TAX DEDUCTIBLE**

## **VOLUNTEER OPPORTUNITIES**

Volunteers are essential to Begin Again Farm's continued good work. Begin Again Farm LOVES volunteers. And volunteers have a lot of fun while doing worthwhile activities with the horses! Currently we need the following:

**Morning and evening horse care** volunteers: fill gaps in the schedule feeding, refilling water, cleaning stalls. No experience necessary; we will train.

Persons experienced in **training** and handling horses to help prepare them for adoption.

**Fundraisers:** Volunteers will help plan and carry out various fundraising events for BAFI. These events include benefit trail rides, silent auction, etc.

**VOLUNTEER WORK DAY—The Second Saturday of Every Month.** Help with special projects around the farm, including painting; fence construction or repair; cleaning the tack rooms, barn or trailers; trail clearing; or whatever needs to be done. *If you are not on our e-mail newsletter etc. list, please contact reusmannl@bellsouth.net*

If you wish to volunteer for any of the above, or just want to be on our list for odds and ends (fence building, painting, selling T-shirts), please contact Rhonda at 706-315-6945.

## **PHOTOGRAPHER WANTED**

Volunteer photographer wanted to take pictures of new horses as they come in and after they have been returned to health. Pictures of adoptable equines should be suitable to be featured on Petfinder and A Home For Every Horse, and in our newsletter.

**THE MISSION OF BEGIN AGAIN FARMS is to rescue imperiled, retired or abandoned hooved animals; provide a safe refuge; promote rehabilitation and return to full physical ability; provide safe adoptions for rehabilitated animals; and expand the knowledge of equine science, training and horsemanship through association with community groups and leaders.**

**Begin Again Farms, Inc. is a 501(c)3 non-profit organization**

***Souls—some sick, some tired, some hurt, some dying. They come here—some running, some limping, some hungry, some stunning. They all search—some for peace, some for friends, some for quiet, some for ends. They all want—love, respect, companionship, safety. They all find it.***

**- John Fullick**

**Begin Again Farms, Inc.**  
**Equine Shelter**  
**PO Box 242**  
**Hamilton, GA 31811**



**BEGIN AGAIN FARMS, INC.**  
**BOARD OF DIRECTORS**

**President—Rhonda Jackson**  
**Secretary—Joleen Till**  
**Treasurer—Heidi Bryan**

<b>John Fullick</b>	<b>Shelley Stansell</b>
<b>Cheryl Fullick</b>	<b>Phillip Authement</b>
<b>Debbie Snead</b>	<b>Thomas Camp, Jr.</b>
<b>Eileen Manseau</b>	

**Looking for an easy way to help  
Begin Again Farms?**

**Print this newsletter and hang a copy  
in the break room of your office of  
workplace (or any waiting room)!**

**Spreading the word about Begin  
Again Farms is a huge help to us!**